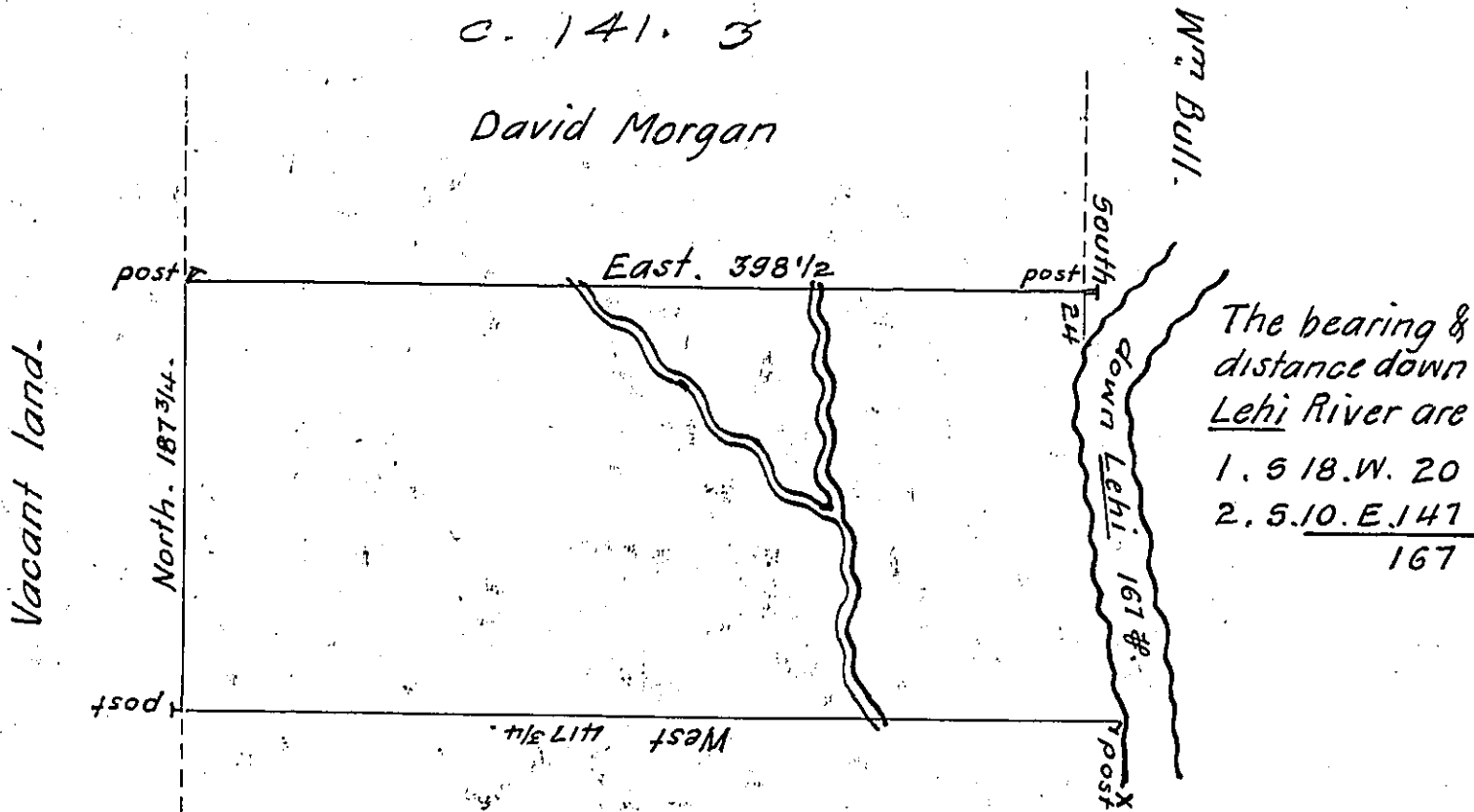


C. 141. 3
David Morgan



William Burges
C. 6. 164.

By Virtue of a Warrant dated the 11 September 1784 Surveyed the 4 October 1788 to John Severns the above described tract of land Situate on the West Side of Lehi about 4 miles below the mouth of Bear Creek in Northampton County Containing four hundred and ~~forty five~~ ^{six} Acres an half and the Allowance of Six $\frac{1}{2}$ Cent & c^a.

Daniel Brodhead Esquire }
Surveyor General. } $\frac{1}{2}$ Geo. Palmer

IN TESTIMONY that the above is a copy of the original remaining on file in the Department of Internal Affairs of Pennsylvania, made conformably to an Act of Assembly approved the 16th day of February, 1833, I have hereunto set my Hand and caused the Seal of said Department to be affixed at Harrisburg, this twenty-second day of October 1906

Geo. D. Brown
Secretary of Internal Affairs.